

Diagnosis of the pathogenic yeasts

*A test combining
Identification and
Susceptibility Testing
from the same inoculum*

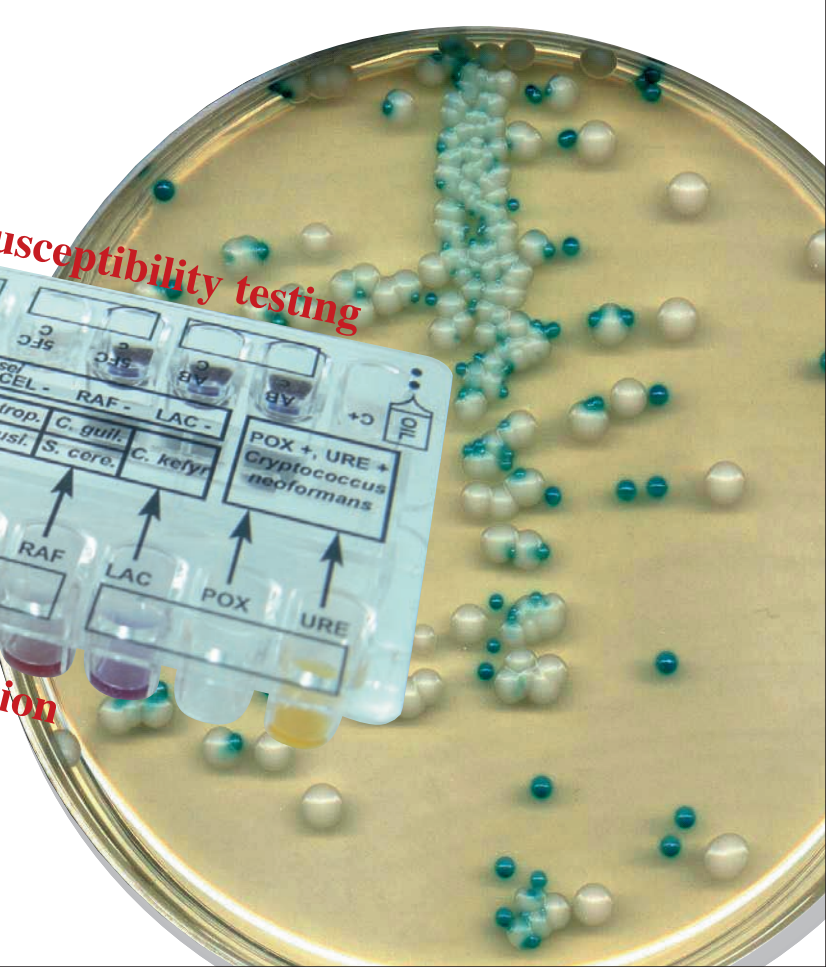
2_in_1

- Convenient
- Cost-effective
- Rapid results
- Suitable for superficial and systemic infections

FUNGIFAST®

Antifungal susceptibility testing

Identification



BENEFITS

Convenient

- Same tray combining
 - * Identification
 - * Antifungal susceptibility testing
- Same inoculum
- Same incubation at 37°C

Easy to read

- Spontaneous coloured reactions
- pH indicator / redox indicator
- Color chart

Easy to interpret

- Adhesive label for rapid identification
- Coding system
- Identification chart

Cost-effective

- two-in-one
- All reagents included in the kit
- Instrument free

Fast results

- Results within 24 hours incubation for most of the yeasts

Quality method

Identification

- Identification of the main pathogenic yeasts :
 - * Hydrolysis of 2 chromogenic substrates (detection of β -galactosaminidase and proline aminopeptidase)
 - * Assimilation of 6 carbohydrates
 - * Hydrolysis of urea
 - * Oxidation by the phenoloxidase

Susceptibility testing

- Standardized technique
- NCCLS breakpoints
- Colorimetric method (Redox indicator)
- Main antifungal agents tested
(Amphotericin B, Flucytosine, Itraconazole, Fluconazole, Voriconazole)

FUNGIFAST®

Products

SUSPENSION FUNGI: Buffered agar medium for dilution and identification

MES FUNGI: Modified RPMI medium for antifungal susceptibility testing

TC FUNGI: Barium sulphate solution for turbidity control

FUNGIFAST tray: 20-well tray, ready to use.

Each tray allows the testing of one sample:

- One identification row of 10 wells
- One antifungal susceptibility testing row of 10 wells.

Catalog

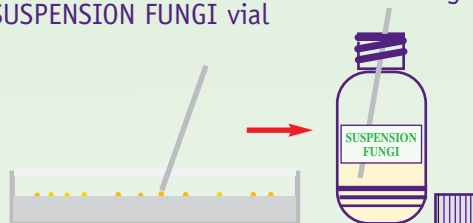
FUNGIFAST® : Kit of 8 tests - Ref. 44408 *

Kit of 30 tests - Ref. 44430 *

METHODOLOGY

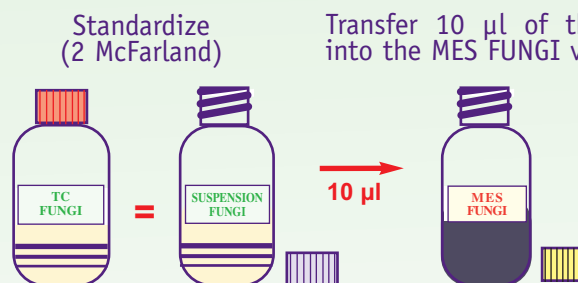
1. Preparation of the inoculum

Remove identical isolated colonies and discharge them into the SUSPENSION FUNGI vial



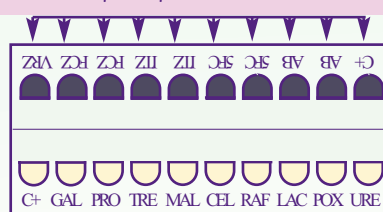
2. MES inoculation

Transfer 10 μ l of the suspension into the MES FUNGI vial



3. Tray inoculation

- 100 μ l of inoculated MES FUNGI
- 2 drops of paraffin oil



- 100 μ l of inoculated SUSPENSION FUNGI

4. Incubation

Incubate at 37 °C
24-72 hours

5. Results

Read the color change with the help of the color chart.

* Product available after compliance with E.U. regulations

Place of manufacture :

ELITech France
Parc d'activités- Allée d'Athènes
83870 SIGNES (FRANCE)
Tél: + 33 (0) 494 88 55 00
Fax: + 33 (0) 494 88 55 22



ELITech
FRANCE
La solution à votre mesure

ELITech FRANCE SAS
305, Allée de Craponne
13300 SALON DE PROVENCE
Tél : 33 (0)4 90 17 54 50
Fax : 33 (0)4 90 17 54 51