

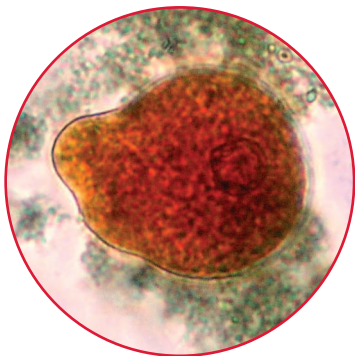
ELIstain Paratest

Staining and concentration
of parasitic elements in stools



Direct determination, Baillenger concentration and staining of parasitic elements in stools

An efficient system for direct determination and concentration of helminths and protozoa in human stools



- ◆ No filtration step for a **high parasite recovery**
- ◆ Optimal concentration (small pellet) for an **improved determination**
- ◆ Unique staining solution (Kop-Color solution) for a **fast and improved differentiation**
- ◆ Biological validation of each batch for a **high reproducibility**

PRINCIPLE :

The **ELIstain Paratest** allows to perform direct determination and Baillenger concentration of parasitic elements in stools.

Kop-Color solution will stain parasitic elements in yellow, yellow-orange or brownish-yellow on a more or less dark blue background allowing a good contrast for a fast and improved differentiation of helminths and protozoa.

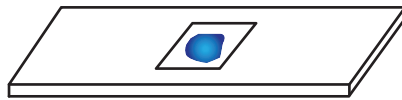
METHODOLOGY :

S I M P L E A N D F A S T

1. Direct determination and staining:

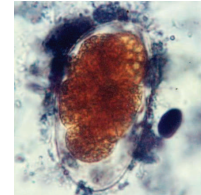
STEP 1: Slide preparation

Stool suspension* + Kop-Color (R1)



*Stool + physiological saline or distilled water or aceto-acetate buffer (R2)

STEP 2: Microscopic examination with blue filter

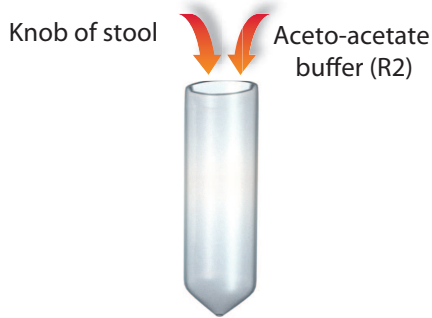


Parasites are yellow, yellow-orange or brownish-yellow on a more or less dark blue background.

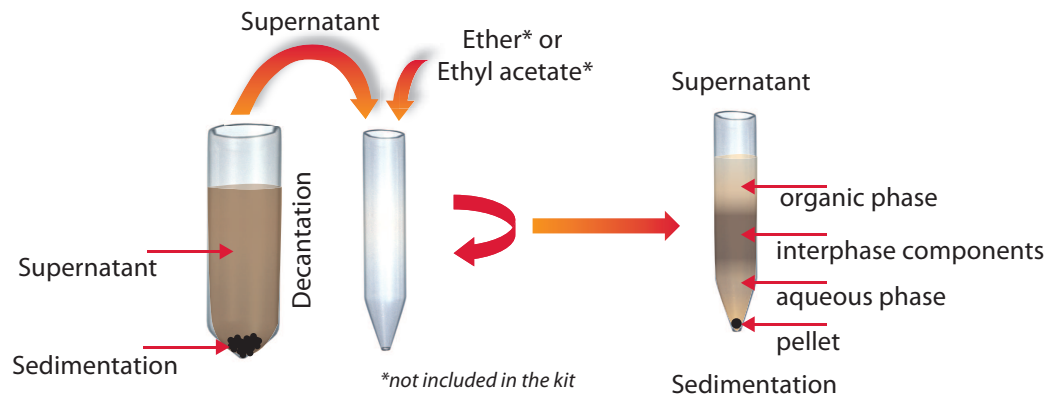
Necator americanus

2. Baillenger concentration and staining

STEP 1: Preparation

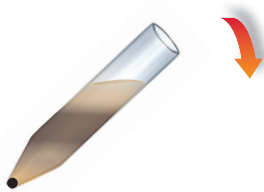


STEP 2: Centrifugation

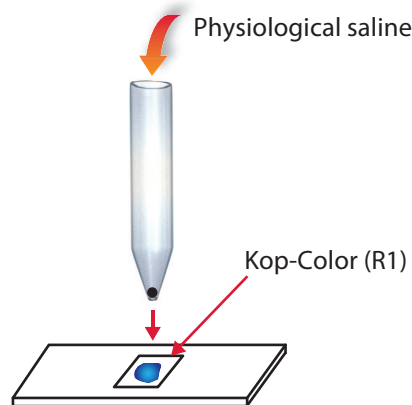


*not included in the kit

STEP 3: Discard supernatant

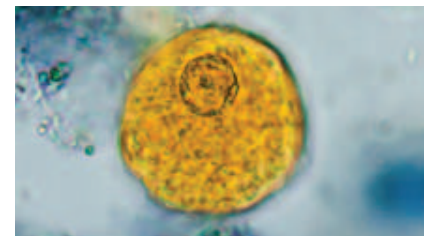


STEP 4: Slide preparation



STEP 5: Microscopic examination with blue filter

Parasites are yellow, yellow-orange or brownish-yellow on a more or less dark blue background



Entamoeba histolytica

PRODUCT RANGE :

REFERENCE	NAME	QTY
66702	ELIstain Paratest	100 Tests

Please contact your sales representative for product availability in your country.



Part nr : EMR.ELI.H.A-490-2012/03EN

WORLDWIDE OFFICES :

Belgium T: + 32 9 2820 531	Middle East & Africa : T: + 971 4 375 2744	United Kingdom T: +44 1442 869320
Brazil T: + 55 27 3025 1415	Serbia T: + 381 11 246 7119	United States T: + 1 609 216 7360
France T: + 33 4 94 88 55 00	Switzerland T: + 41 26 663 86 60	855-ELITECH (855-354-8324)
Italy T: + 39 2 48 40 35 42	Netherlands T: + 31 485 511 675	