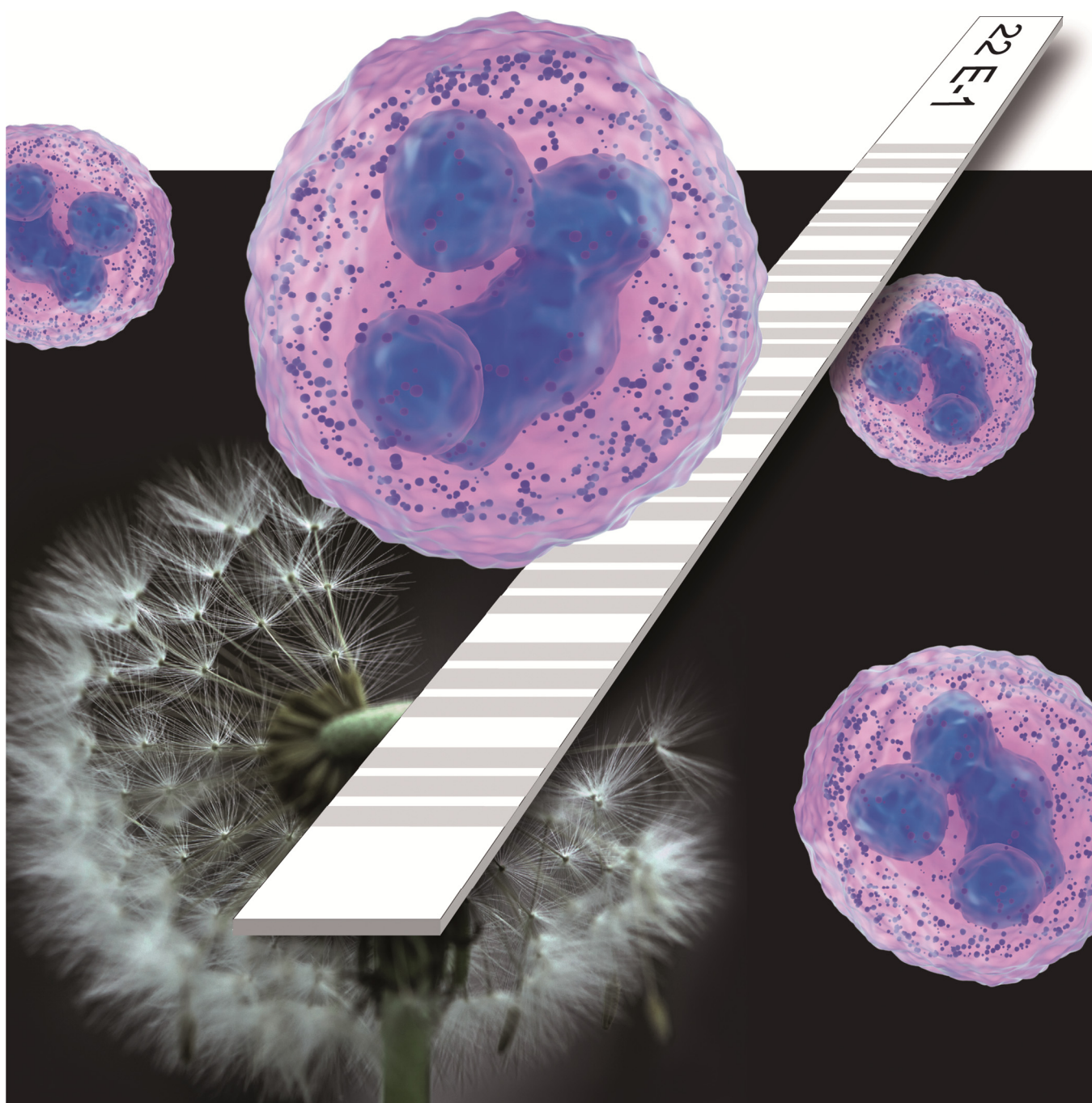


Allergy Diagnostics

sIgE Allergy LINE 1 for Inhalation Allergens



sIgE Allergy LINE 1

LINE Immunoassay for 27 Inhalation Allergens

Allergies and food intolerances are steadily increasing in our culture over the past 30 years. Currently around 30 % of the European population is affected, in Germany for example, around 25 million people. Early, accurate and professional diagnosis may relieve affected people enormously.

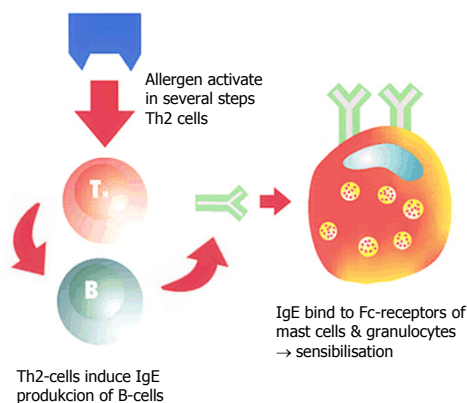
Our sIgE Allergy LINE 1 assay (27 allergens) is the ideal solution for a reliable and fast result in the determination of allergen-specific IgE antibodies in patients with suspected inhalation allergies with different clinical symptoms:

- Seasonal and perennial rhinitis and conjunctivitis
- Allergic asthma
- Allergic eczema
- allergic gastrointestinal diseases

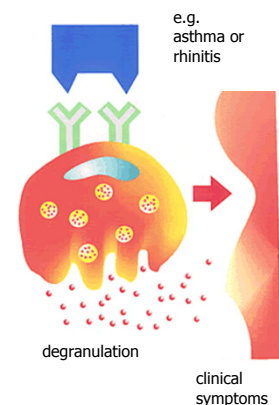
This kind of allergy diagnosis has been developed for professional groups like physicians, allergists and non medical practitioners who seek a fast, reliable, jointly solution in direct communication with patients. Different situations or patient-specific conditions could make conventional skin test methods (prick test) partially impossible or difficult to be carried out. Thus in-vitro testing should be preferred for example instead of a skin test, at least in pregnant women, in children, or in patients with acute skin problems, respectively. However this possibility of diagnosis should be mentioned to the patient in general.

Code	Allergen (pollen or inhalative particles)
	Standard 3 Standard 2 Standard 1
w1 w6 w9	Ragweed Mugwort Plantain
w20 w21 m2	Stinging nettle Wall pellitory Cladosporium herbarum
e1 e3 e5	Cat dander Horse dander Dog dander
i6 i903	German cockroach American cockroach Total IgE
dx2 k81 k82	House dust mite mix * Benjamin fig Latex milk
t216 t3 t4	Alder Silver birch Hazel nut
t9 t14 t23	Olive Cotton wood Cypress
t25 g2 g17	European ash Bermuda gras Bahia gras
g6 g12 gx17	Timothy gras Rye Grass mix **

First Contact
with the allergen:
specific IgE-antibodies
(sIgE) are generated



Second Contact
with the allergen:
release of inflammation
mediators, e.g. histamine
⇒ symptoms



* House dust mite mix: Dermatophagoides pteronyssinus (d1), Dermatophagoides farinae (d2)

** Grass mix: Sweet vernal grass (g1), Orchard grass (g3), Ryegrass (g5), Kentucky blue grass (g8)

- Advantages**
- ⇒ Fast and comprehensive diagnostics
 - ⇒ Basic profil for respiratory allergens in Europe

Order No. 5110 sIgE Allergy LINE 1



GA Generic Assays GmbH
Ludwig-Erhard-Ring 3
15827 Dahlewitz/Berlin
Germany

Phone: +49 (0) 33708 9286 0
Fax: +49 (0) 33708 9286 50
info@genericassays.com
www.genericassays.com