



**MILESTONE**

HELPING  
PATIENTS



# SAVE TIME WITH AUTOMATIC TRACKING



**R-Tracker**  
Automatic Rack Scanner

# THREE-IN-ONE: SCAN, CHECK AND TRACK

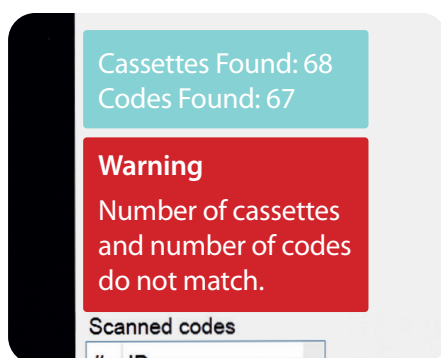
Manual cassette scanning is a tedious, time-consuming and error-prone task, as operators need to manually scan the cassettes one by one, to track the steps of the histological process. R-Tracker patented technology (EP 3557218 B1) removes this manual scanning of all the rack's cassettes through the complete automation of this process.

## | SIMPLE AND AUTOMATIC

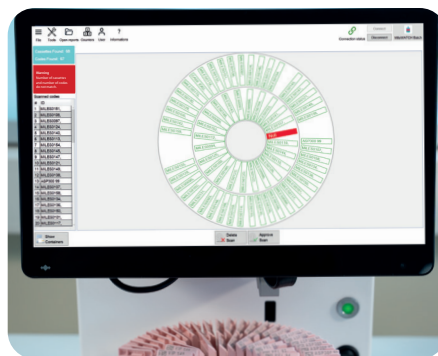
The intuitive and user-friendly software enables the tracking specimens data **with just one click**. Through a unique and innovative technology, R-Tracker automatically scans all the cassettes present in the rack, providing accurate data on number of the cassettes and the corresponding codes.

## | ACCURATE DOCUMENTATION

The R-Tracker provides an all-in-one solution for three operations: *scanning*, *checking* and *tracking* the cassettes. Simultaneous and accurate counting and scanning is guaranteed through a **double-sensor technology** that checks the presence of the cassette and its corresponding code. Moreover, the **R-Tracker detects any missing or unreadable codes**, thus securing the integrity of each batch. Chain of custody is ensured through the complete documentation available in just a few seconds.



Complete documentation of scanned cassettes and codes. Missing and/or unreadable codes are mapped in the rack diagram.



A laser pointer locates the cassettes with missing or unreadable codes

## | FAST TRACKING

With R-Tracker the operator can reduce the tracking time to **15 seconds** for 70 standard cassettes. This rapid automatic scanning saves a great amount of time, thereby enhancing the laboratory workflow so that the operator's skills can be used for other tasks.



## | EASY INTEGRATION

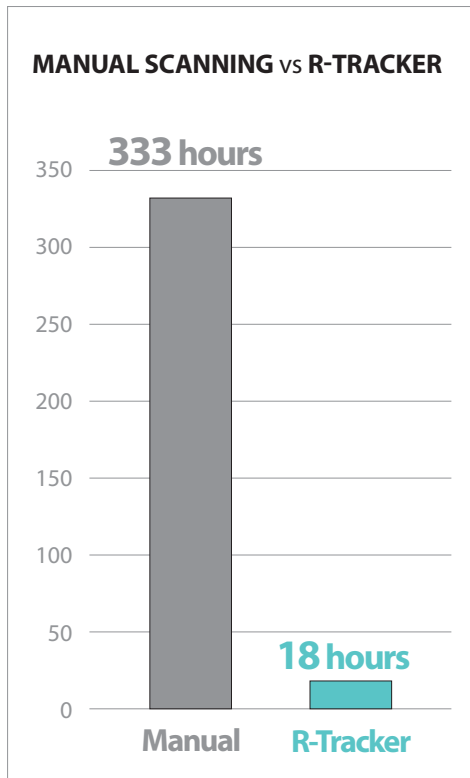
As documentation and tracking are key for **patient safety**, R-Tracker is integrated with the MileWATCH software for monitoring and tracking the specimens, thus creating a complete database. In addition, the documentation can be easily shared through the Laboratory Information System (LIS).

## I TIME SAVING

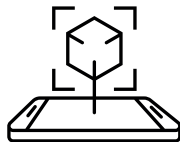
In today's laboratory routine, operators have to deal with several tasks and are often under considerable time pressure. Manual cassette scanning is a time-consuming step, that absorbs valuable operator time. The R-Tracker is designed to enhance the efficiency of the laboratory and to optimize its workflow.

**95%**  
**TIME SAVING**  
OVER MANUAL  
SCANNING

**315**  
**HOURS**  
SAVED  
EVERY YEAR



*Comparison of the operator time in hours on one year basis (equivalent to 300.000 specimens, 1000 cassettes/day).*



AR PRESENTATION

**VIEW ME IN YOUR LAB**

# OPTIMIZED PROCESS FOR HIGHER EFFICIENCY AND PATIENT SAFETY



**SIMPLE AND AUTOMATIC**  
**ACCURATE DOCUMENTATION**

**95% OF TIME SAVING**

**FAST TRACKING**

**EASY INTEGRATION**

## AVAILABLE MODELS

R-Tracker is available in two different configurations.



*With built-in PC and monitor*



*Without PC and monitor*

## COMPATIBLE UNITS

R-Tracker fits the cassettes' racks from all Milestone tissue processors.



**LOGOS One**

Fully Automated Innovative Tissue Processor



**LOGOS**

First All-In-One Hybrid Tissue Processor



**MAGNUS**

Lean High-Throughput Tissue Processor



**PATHOS DELTA**

Fully Automatic Tissue Processor

# MILESTONE HELPING PATIENTS

Milestone is a company headquartered in Northern Italy and was founded in 1988 as a corporation specializing in advanced microwave instrumentation for analytical and organic chemistry labs. As the technology leader in pre-analytical instrumentation, Milestone supports a worldwide installed base of over 25.000 systems. In 1994, Milestone established a separate Medical Division to expand our expertise in the crucial pre-analytical phase to the world of histopathology. We pioneered the first microwave rapid tissue processor for same day diagnosis and the first macro digital system to enhance the grossing step. Today, our rapid tissue processors, macro-digital imaging systems, and pre-analytical instrumentation are used every day in the most renowned clinical and research laboratories around the world. But we never stop. We continue to lead the industry with constant innovation and improvement. Driven by the leading principle we live by, Helping patients.

## MILESTONE



HELPING  
PATIENTS

**MILESTONE Srl** - Via Fatebenefratelli, 1/5 - 24010 Sorisole (BG) - Italy  
Tel: +39 035 4128264 -  
[www.milestonemed.com](http://www.milestonemed.com) - email: [marketing@milestonemed.com](mailto:marketing@milestonemed.com)

**MILESTONE MEDICAL TECHNOLOGIES, INC.**  
6475 Technology Avenue, Suite F, Kalamazoo, MI 49009 - USA  
Tel: 269-488-4950 - Toll-free: 866-995-5300 -  
[www.milestonemed.com](http://www.milestonemed.com) - email: [info@milestonemed.com](mailto:info@milestonemed.com)

