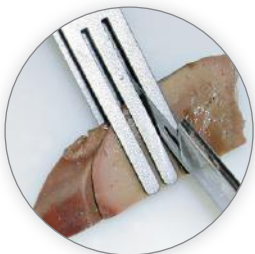
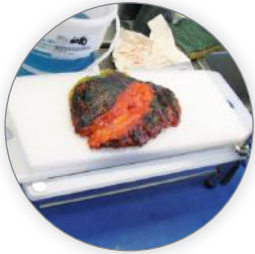




MILESTONE
H E L P I N G
P A T I E N T S



Milestone's innovative line of grossing devices

- ▶ Simplify, standardize and document grossing procedures
- ▶ Reduce turnaround time
- ▶ Improve diagnostic quality

**According to ASCO/CAP*
recommendations
for HER-2, ER, EgR testing**



How to:

- Speed up
- Simplify
- Standardize
- Document

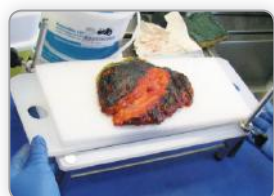
grossing procedures

ProCUT Slicing Devices *(International Patent Pending)*

Eliminate the need for gross hardening, overnight pre-fixation, and cooling/freezing of specimens prior to sampling. Easily dissect fresh tissues.

- Eliminate guesswork and consistently slice large fresh and fixed tissues
- Standardize grossing procedure independent of operator
- Accelerate fixation procedures by having standard tissue thicknesses
- Reduce total turnaround time of biospecimens

Slicing fresh breast tissues in accordance with recommendations of ASCO/CAP for HER2, ER, EgR* testing at 5 mm thickness in less than 10 minutes.



1

Place specimen on foam board



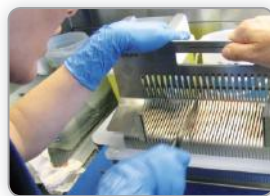
2

Slide suitable dome over specimen and lock dome in position



3

Slide side boards through grooves to hold specimen firmly in place



4

With a long-blade knife, slice through specimen at 5mm intervals



5

Parallel slices of fresh breast tissue are ready for fixation/processing

*American Society of Clinical Oncology/College of American Pathologists Guideline Recommendations for Immunohistochemical Testing of Estrogen and Progesterone Receptors in Breast Cancer. Hammond et al - Arch Pathol Lab Med-2010

ASCO/CAP Guideline Recommendations for Human Epidermal Growth Factor Receptor 2 Testing in Breast Cancer A. C. Wolff et al. Arch Pathol Lab Med - Vol. 131, January 2007

Standardization and documentation of the gross

ProCUT P 5

Typical application: slicing of whole prostate at 5 mm intervals.

- Reliable comparison studies M.R.I./ histological results are now possible.
- The ProCUT P 5 consists of a grooved steel/propylene base and 2 steel domes which will accommodate specimens with a width of 40-60mm and a length of 130mm.



ProCUT XL 5

Typical application: slicing of a wide variety of specimens (e.g. breast, kidney, lungs, heart, etc.) at preset thicknesses.

- The complete kit consists of a grooved base and 4 steel domes which will accommodate specimens of 60, 80, 100, and 120mm widths and a maximum length of 160mm.



ProCUT XXL 5

Typical application: slicing large specimens (e.g. mastectomies) at 5mm intervals.

- The complete kit consists of a grooved base and 3 domes to accommodate specimens of 100, 120, and 140mm widths and a maximum length of 280mm.



ing step

ProCUT 5

Typical application: slicing of specimen at 5 mm intervals and a length of 70 mm.



CutMATE Forceps

The innovative forceps for grossing at 2, 3, 4 mm thickness

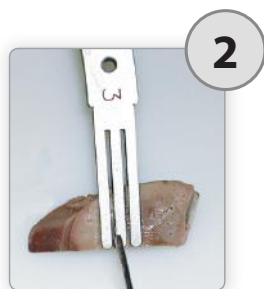


- Eliminate the guesswork in cutting specific block thicknesses
- Standardize blocks taking
- Take serial tissue blocks in one simple step (e.g. lymph nodes)

Simple as...



Hold specimen in forceps and make first cut.



Cut other side of the central fork to obtain a pre-set thickness specimen.

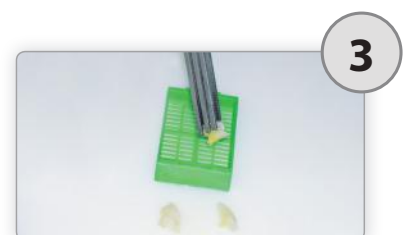


Separate specimen to be processed.



Place specimen in cassette.

Grossing lymph nodes at 2 mm thickness



Problem: tissue processors protocols are based on thickness of specimens

Solution: CheckLITE Non-contact, laser-based, thickness measuring device

- An objective reference in the grossing procedure
- Improved productivity while reducing stress of operator at time of grossing
- Reduce the need for reprocessing and improve processing quality by ensuring that thicknesses of all specimens fit selected protocols



Green light ●

Specimen is at the preset thickness or below.



Red light ●

Sample is above preset thickness and must be re-cut or set aside for a more appropriate processing protocol.

CheckLITE unique features

- Non-contact, instantaneous readout
- High sensitivity: 80 microns
- No calibration required
- Engineered for the harsh environment of a grossing station



Also available for SuperMega** cassettes

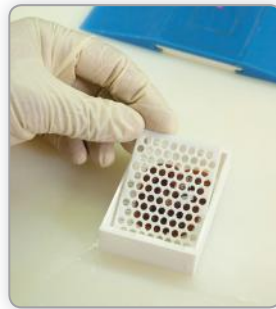
** SuperMega is a trademark of Thermo Fisher Scientific

Spacers for SuperMega Cassettes**



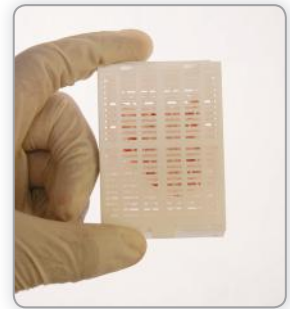
1

Place specimen in SuperMega cassettes



2

Place spacer on top of specimen



3

Close cover. Specimen will remain firmly in place during processing

Ideal for whole mount prostate specimens

- Ensure distortion-free and consistently high quality tissue processing.
- Spacers can be reused following a de-waxing procedure.
- Suitable for use in microwave and conventional tissue processors.
- Available in 2, 3, 5mm thicknesses to fit your requirements

MacroPATH D

Macro digital imaging system

Rapidly capture, annotate, and store gross specimen images for:

- Use in the final patient report
- Pathologist review
- Tumor boards
- QC



MILESTONE



HELPING PATIENTS

MILESTONE Srl - Via Fatebenefratelli, 1/5 - 24010 Sorisole (BG) - Italy
Tel: +39 035 4128264 - Fax: +39 035 575498
www.milestonemedsrl.com - email: medical@milestonesrl.com

UNI EN ISO 9001: 2008 / UNI EN ISO 13485:2004 CERTIFIED

MILESTONE MEDICAL TECHNOLOGIES, INC.
6475 Technology Avenue, Suite F, Kalamazoo, MI 49009 - USA
Tel: 269-488-4950 - Toll-free: 866-995-5300 - Fax: 269-488-4949
www.milestonemed.com - email: info@milestonemed.com

In your country: